

# EVOLO Emergency Phone Sign

EVOLO Emergency Phone Sign designed with die-aluminium body and frame are fitted for installation in railway and tunnel application environments. With high level of ingress and impact protection for dusty and harsh environments.

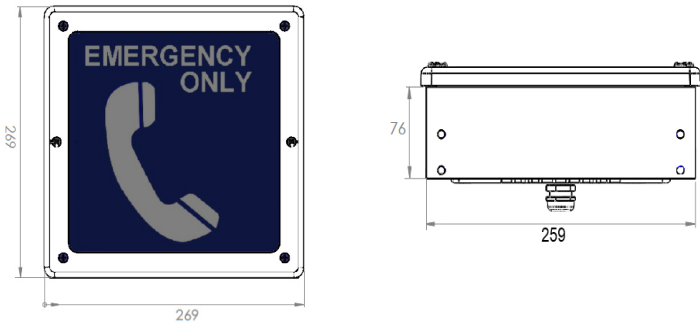
## FEATURES AND BENEFITS

- Blue Square Telephone Decal Sign
- M20 Rear cable entry
- Rear heat sink for optimal heat dissipation
- Stainless steel screws



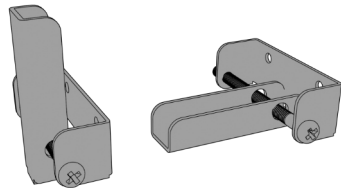
PRODUCT CODE	LENGTH	WIDTH	HEIGHT
EVOEPS	269	269	76

Emergency Phone Sign. Dimensions in MM



## OPTIONAL ACCESSORIES

- Swing arms for recessed installation (optional)



- Fly lead multi-core cables
- Weidmuller HDC Connectors

## EVOLO Motorist Emergency Phone Sign

Family Name	Evolu Emergency
Product Code	EVOEPS
Body Colour	White Powdercoated
Power Rating	7 W
Power Supply	230 V AC
LED Chip	Samsung/Osram
CCT	4000 K
Ambient Temperature	Ta 40°C
IK Rating	IK 08
IP Rating	IP 66
Fitting Weight	5.6 kg
Installation	Recessed
Applications	Roads & Rail Tunnels Underpasses
Standards	AS/NZ 60598 General Requirement and Tests AS/NZ 2293 Emergency Escape Lights
Photometric Data	Available by Request



LED light source inside. We do not recommend service or maintenance in situ or on site. To ensure ongoing integrity and functionality LED luminaires shall be serviced or maintained by a competent person in a clean workshop environment free from dust, dirt and moisture.

SPECIFICATIONS MAY BE SUBJECT TO CHANGE