

EVOLO Low Level Egress

EVOLO Low Level Egress is a compact square shaped light fitting for installation in tunnels and warehouse applications. Providing a high level of luminance for safe evacuation along egress pathways in the case of emergency. Featuring a high impact clear diffuser and die-cast aluminium powdercoated white body.

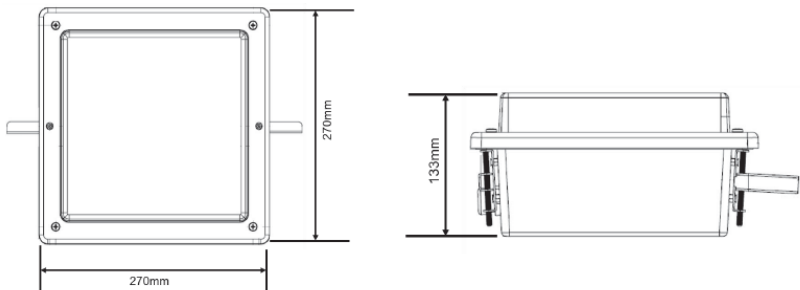
FEATURES AND BENEFITS

- High illuminance 4000K LED
- Clear Polycarbonate Diffuser
- Die-Cast Aluminium Body & Frame
- Rear heat sink for optimal dissipation
- Rear M20 Cable Entry
- Optics can change depending on application requirments



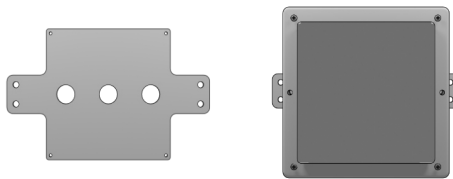
PRODUCT CODE	LENGTH	WIDTH	HEIGHT
EVOLLE	270	270	133

Evolo Low Level Egress. Dimensions in MM

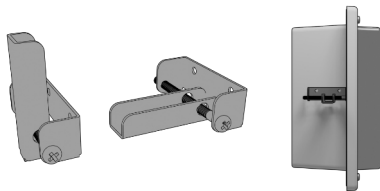


OPTIONAL ACCESSORIES

- Surface mount back plate
- Swing arms for recessed installation



Front view with Surface Mount plate



Side view with Swing arms

- Fly lead multi-core cables
- Weidmuller HDC Connectors

EVOLO Low Level Egress

Family Name	Evolo Emergency
Product Code	EVOLLE
Body Colour	White Powdercoated
Power Rating	22.5 W
Power Supply	230 V AC
LED Chip	Samsung/Osram/Tridonic
CCT	4000 K
Ambient Temperature	Ta 40°C
IK Rating	IK 08
IP Rating	IP 66
Fitting Weight	5.6 kg
Installation	Recessed/ Wall mount
Applications	Roads & Rail Tunnels Underpasses
Standards	AS/NZ 60598 General Requirement and Tests
Photometric Data	Available by Request



LED light source inside. We do not recommend service or maintenance in situ or on site. To ensure ongoing integrity and functionality LED luminaires shall be serviced or maintained by a competent person in a clean workshop environment free from dust, dirt and moisture.

SPECIFICATIONS MAY BE SUBJECT TO CHANGE